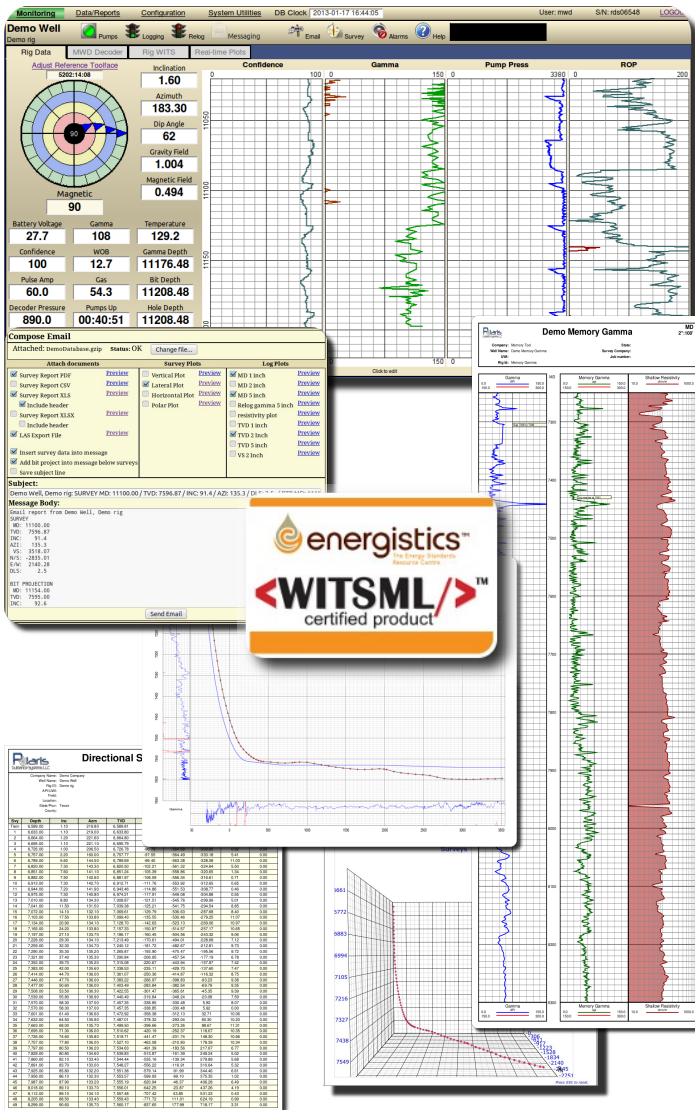


Polaris Guidance Systems, LLC

WITSML - MWD and Directional Solutions

Remote Directional System

For a complete WITSML solution include the Polaris MWD and Directional logging system. With its WEB browser user interface the Polaris Logging Systems can be operated either on-site or remotely via Internet. The built-in WITSML data push provides 100% synchronization with up to four WITSML storage servers. The Polaris Logging systems contain all of the standard functions required and adds several unique features such as a built-in contact and Email manager for sending out reports and plots. Compatible with all major brand MWD pulse decoders and all WITS based rig monitoring systems.



Features include:

- Compatible with all major brand MWD decoding systems
- Compatible with all WITS based rig monitoring systems
- Full LAS file export and import functions
- Continuous-form PDF log plot output for roll paper plotters
- Complete selection of detailed survey plots and reports
- Easily create backup files for safe storage
- Automatic data synchronization to client's WITSML server for the most accurate and up-to-date information
- Remotely accessible via Internet allowing remote control or view-only access to the system by multiple users
- User definable plot configurations for easy report management
- Detailed survey plots which can include well planning data for as-built reporting and gamma ray overlays
- Built-in Email contact management for sending predefined plots, survey reports, LAS export files or other data
- Alarm condition notifications , automatic re-logging and a variety of other time saving features
- Survey on connection for unmanned operation

Features of the WITSML module include:

- Data pushed per WITSML specification with built in data transmission error correction
- Survey and Depth Logs transmitted to as many as four independent destinations
- Automatically re-transmit all data corrections from rig site including surveys and logs for complete synchronization
- Simple configuration – all that is needed is login information to the destination WITSML server
- Extensively tested with industry leading WITSML vendors
- Time Log data push for near real-time monitoring

Polaris Guidance Systems, LLC
21617 Rhodes Road
Spring Texas 77388



Phone: 281.528.6173
Fax: 281.528.6359
WEB: <http://www.polarisguidance.com>
Email: sales@polarisguidance.com